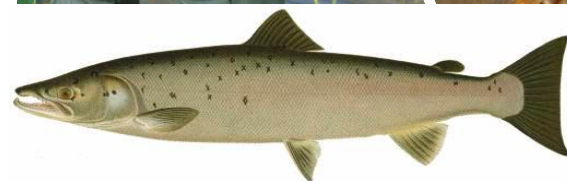


LIFE CONNECTS

- towards restored ecosystem services in rivers



Länsstyrelsen
Skåne



Sportfiskarna



Havs
och Vatten
myndigheten



Länsstyrelsen
Kalmar län



The LIFE CONNECTS project:

7 partners

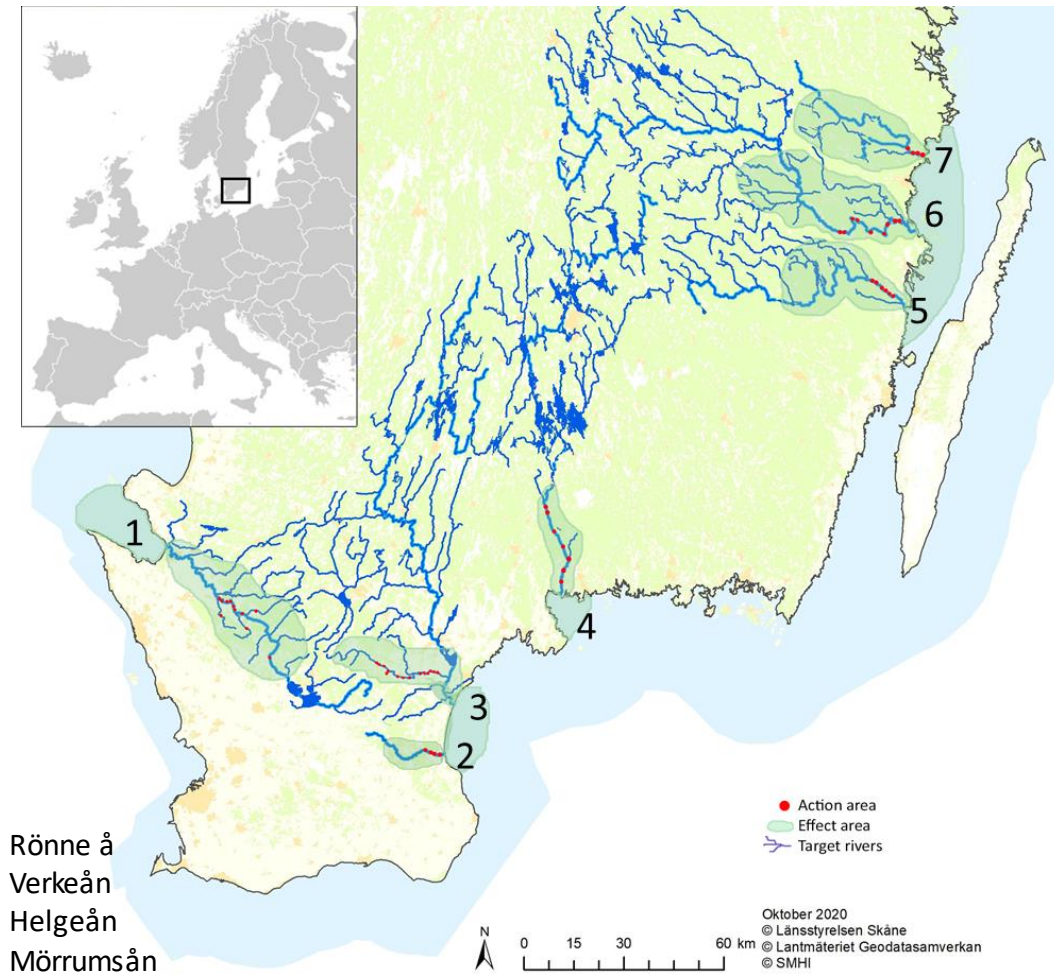
7 target rivers

Project period: 2019-2026

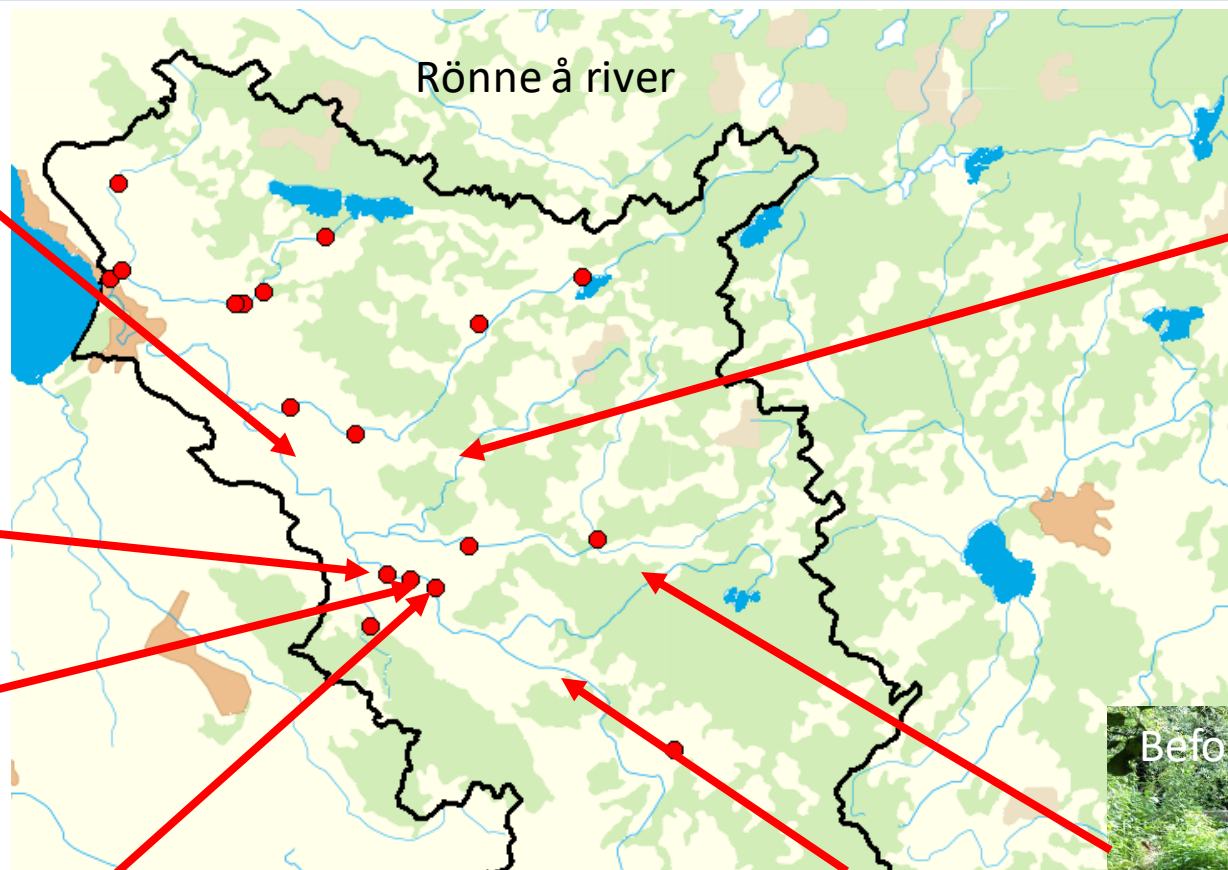
Budget: ~ 10 M€

Actions: river restoration, dam removal, fishpassages, mussel introduction and much more.

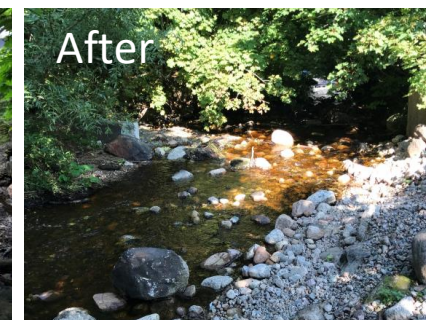
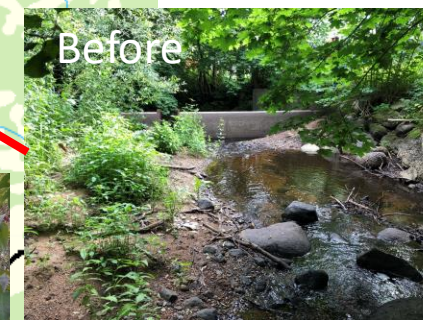
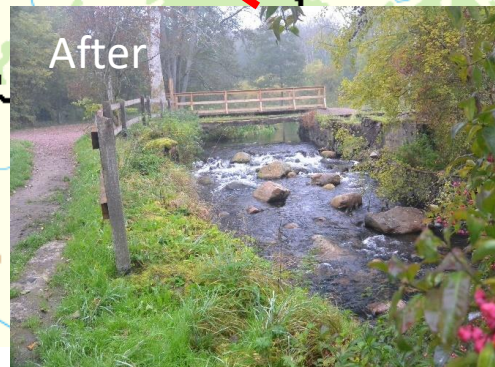
Target species: Atlantic salmon (*Salmo salar*), freshwater pearl mussel (*Margaritifera margaritifera*), thick-shelled river mussel (*Unio crassus*), European eel (*Anguilla anguilla*) and many more species will benefit from the project.



River catchment approach



- Barriers
- Habitats
- Species



Dam removal – Marieberg in Mörrumsån river



Dam removal – small barriers

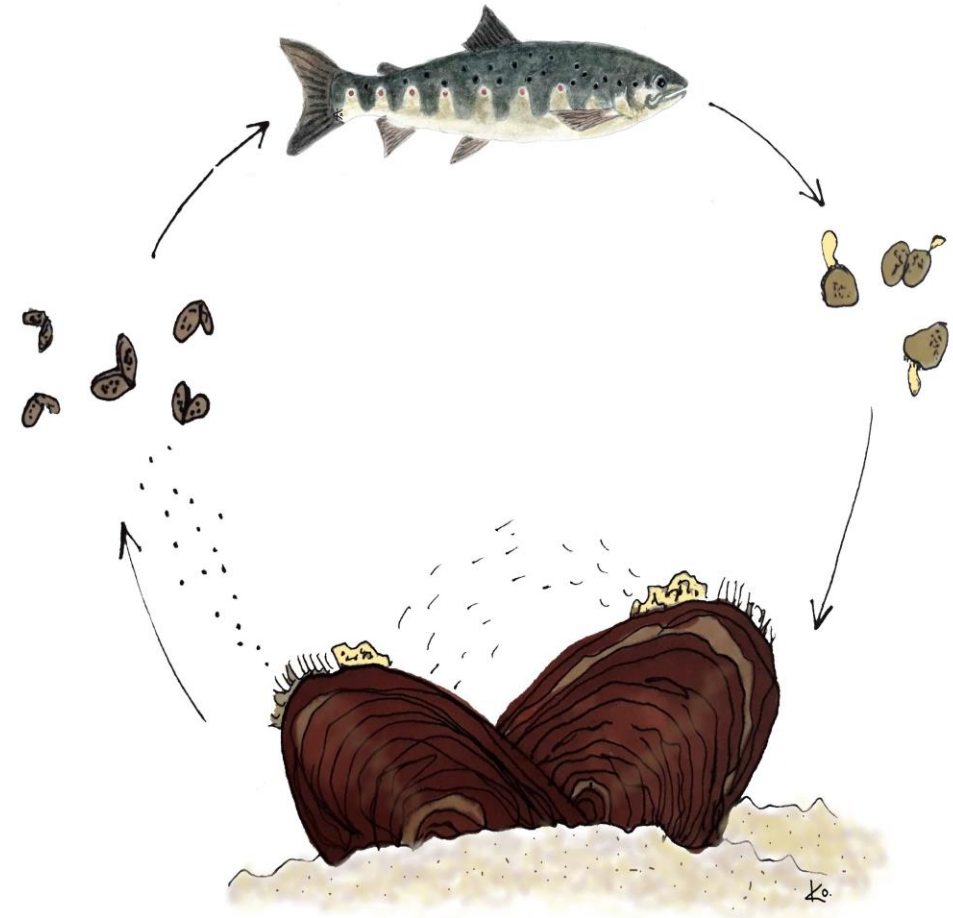
Before



After



River restorations – for fish and mussels



The parasitic stage of the freshwater pearl mussel lifecycle.

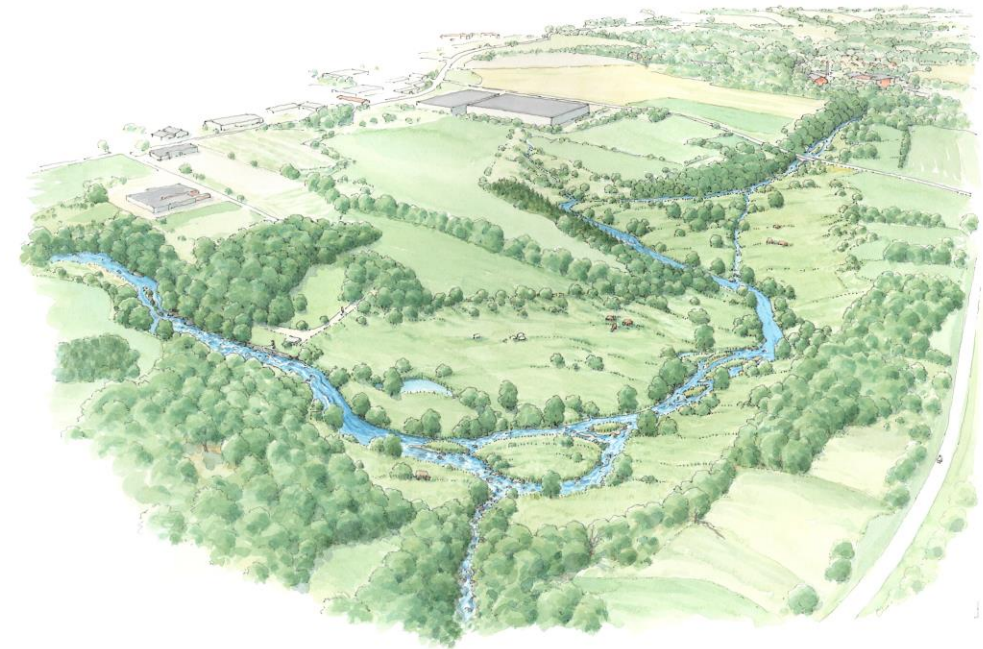
Successful removal will give multiple benefits!



Pre restoration conditions, HPP1



Post restoration conditions (2030)



Biodiversity strategy 2030 – 25000 km free flowing rivers

Habitats directive – improve the conservation status of habitat types and species (3210, 3260, Atlantic salmon, freshwater pearl mussels, thick shelled river mussel) and overall biodiversity.

Water framework directive – good status for connectivity, hydromorphology and biological parameters such as fish.

Socio-economic benefits for the local community and much more!



Länsstyrelsen
Skåne



LIFEConnects

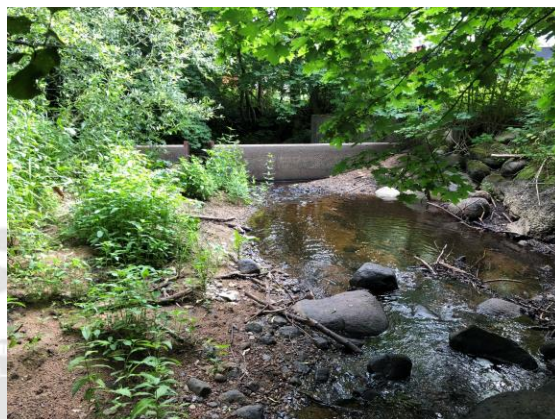


Before

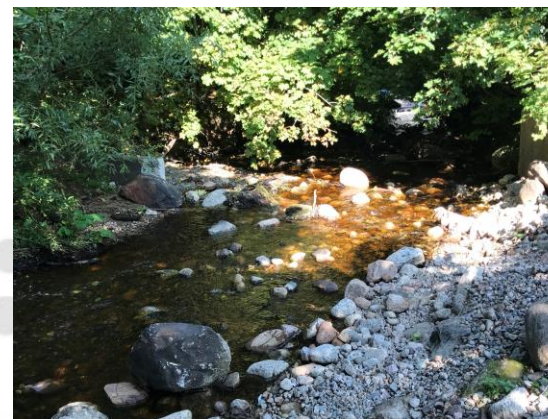


After

Thank you!



Before



After

