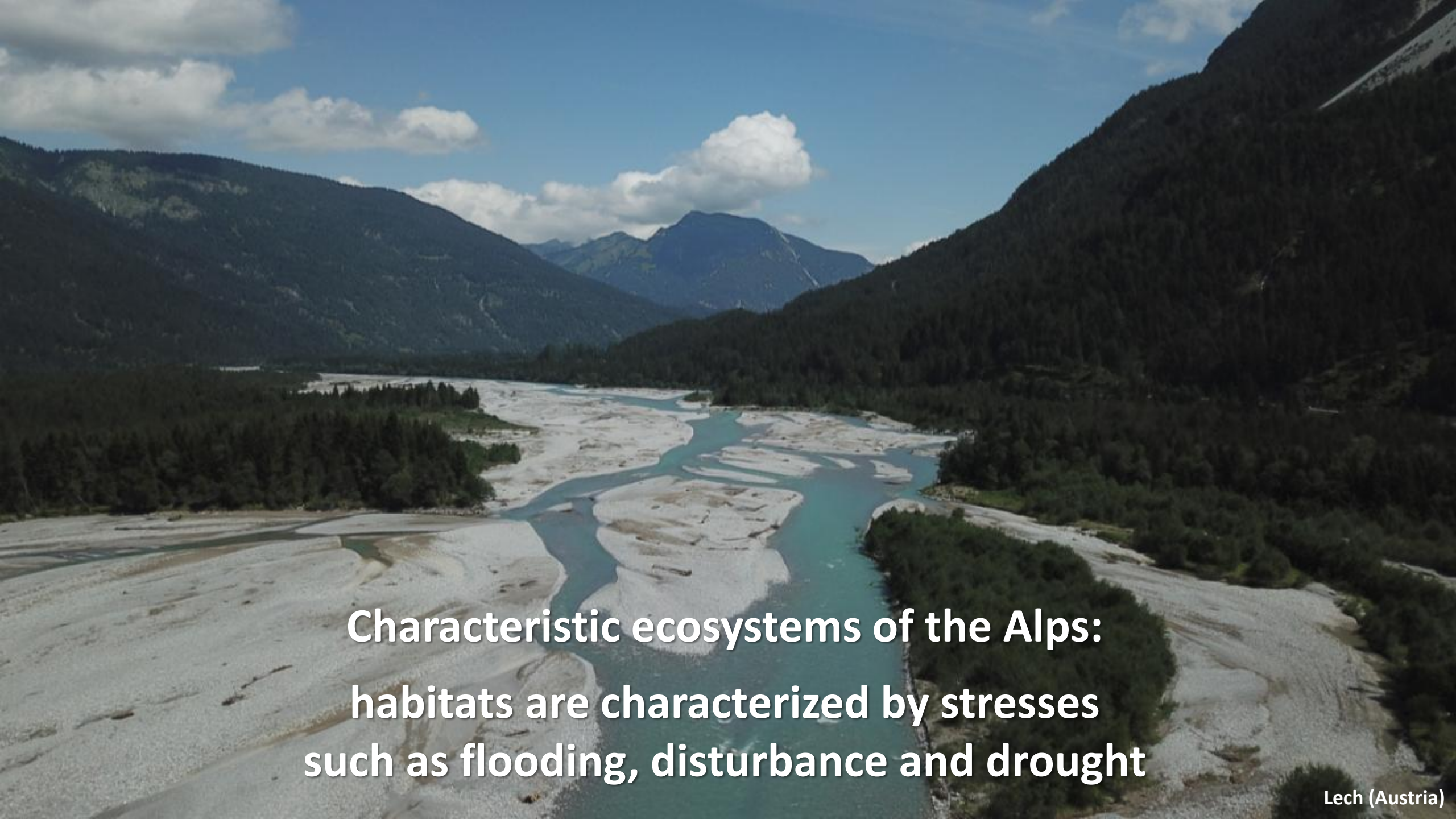




Decline of gravel banks and related species (*Myricaria*) due to river degradation

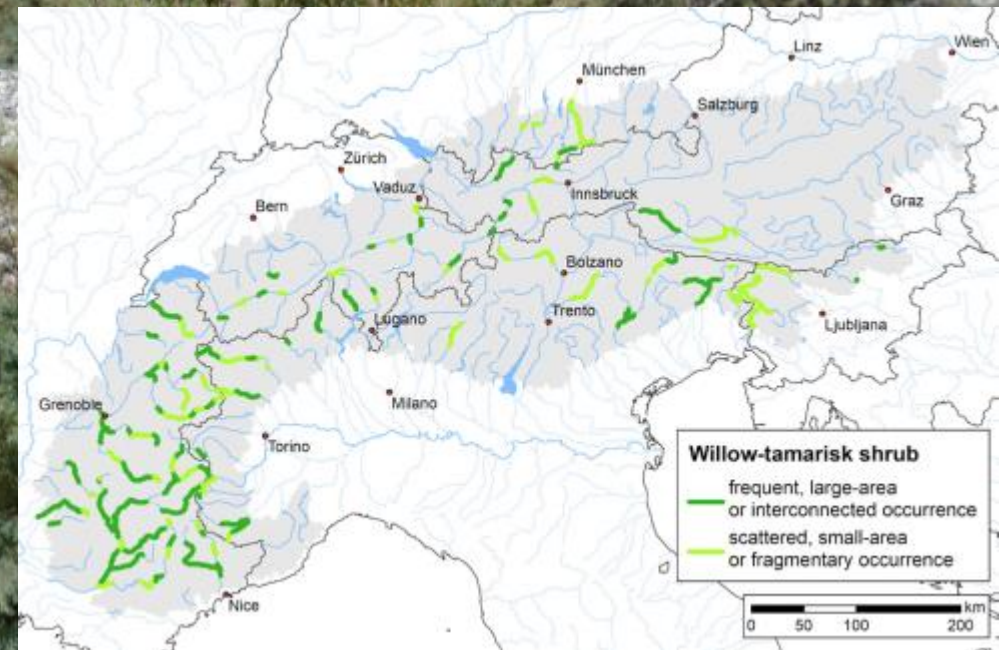


**extensive gravel areas & high morpho- and hydrodynamics:
Braided rivers**

An aerial photograph of a wide, braided river system flowing through a mountain valley. The river is composed of numerous light-colored, gravelly channels separated by small islands of dark green forest. The surrounding mountains are steep and covered in dense evergreen forests. In the distance, more mountain peaks are visible under a blue sky with scattered white clouds.

**Characteristic ecosystems of the Alps:
habitats are characterized by stresses
such as flooding, disturbance and drought**

"hot spot" of a specific flora and fauna
e.g. Myricaria germanica



Ubaye (France)

**Process of degradation -
Is it possible to reverse this process?**

How late is it?

?

??

???

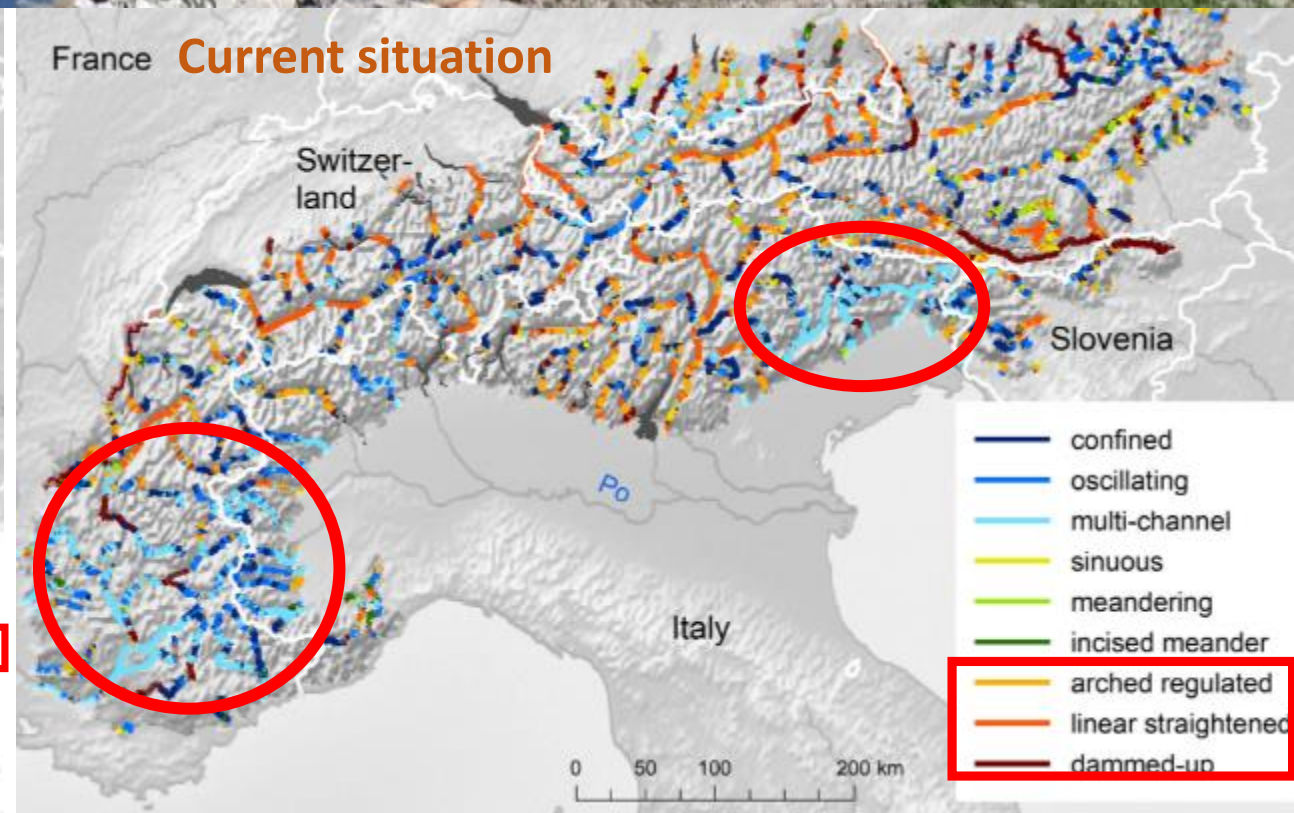
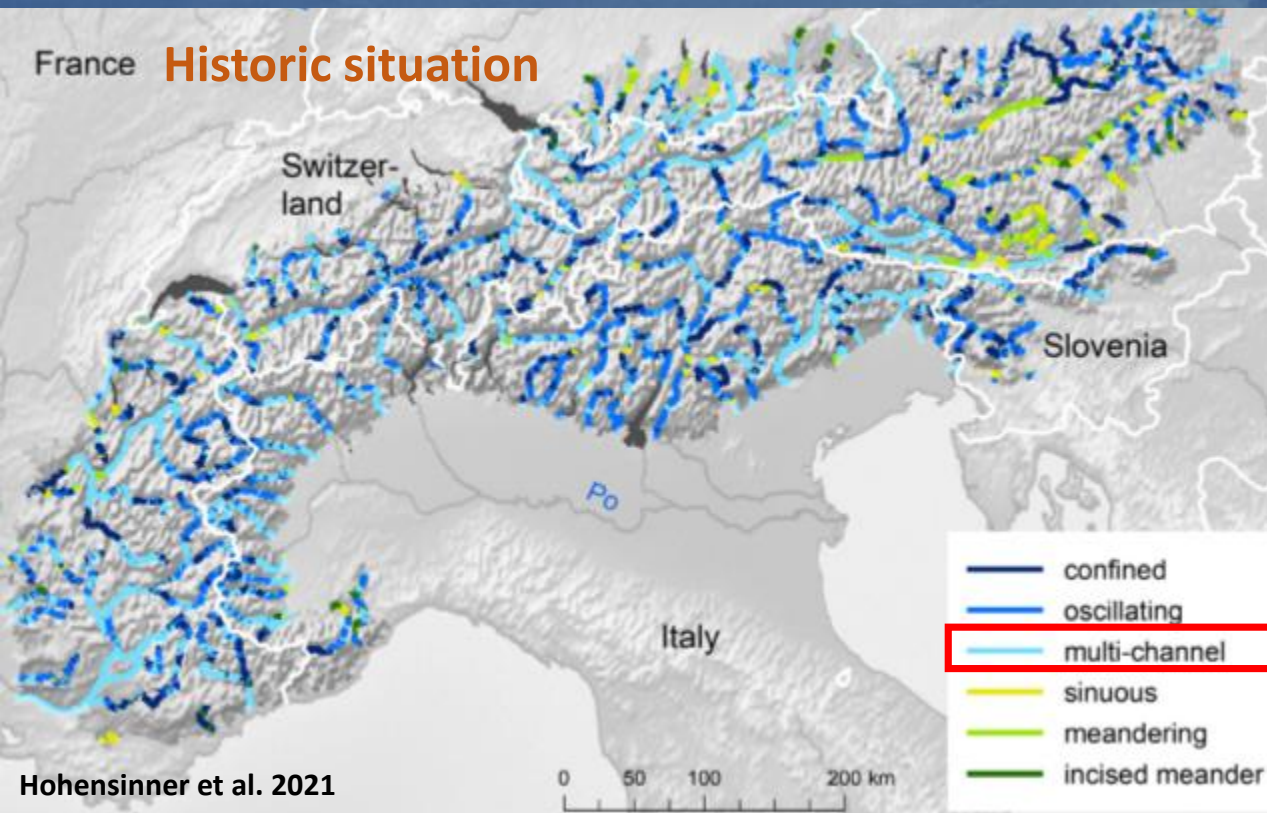




The causes can be summarized in four factors:

1) Quantitative extinction of riparian habitats

Upper Rhine (Germany)



2) Degradation of remaining riparian habitats

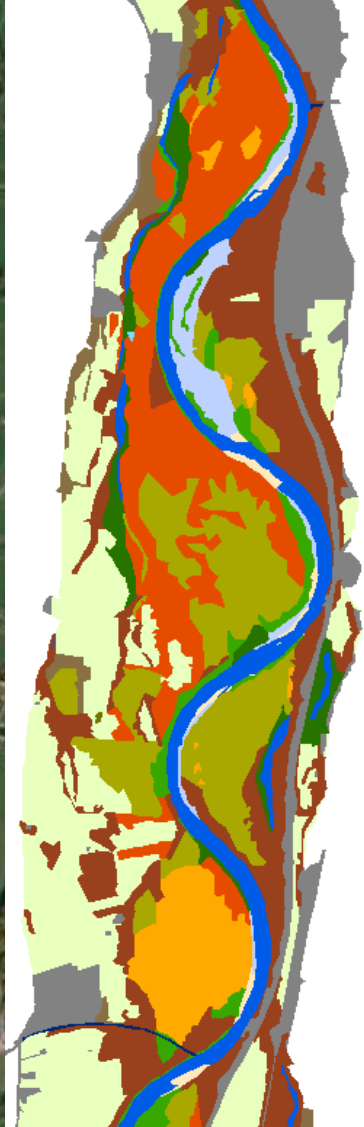



Upper Isar (Germany)

3) Fragmentation and below minimum habitat sizes

1920

2015



A photograph showing three people engaged in a conservation activity. In the center, a woman with short brown hair, wearing a dark blue jacket and dark pants, is using a long-handled shovel to plant a young willow sapling into a hole in the ground. To her left, another woman with long brown hair, wearing a grey jacket, is looking on. To the right, a man with short dark hair, wearing a dark blue jacket, blue jeans, and green rubber boots, is also looking at the sapling. The ground is sandy and uneven, with some dry grass and twigs scattered around. The background consists of a dense thicket of bare, brown branches, likely from willow trees. The overall scene suggests a riverbank restoration project.

4) Reintroduction succeeds in very few cases

?

??

???



?

??

!!!



Back to the future?



„Klondike“ (Yukon River, Whitehouse (Canada))

**“big solutions”
can at least lead to a trend reversal.**





Lower Traisen(Austria)



Danube (Austria)



Upper Drava (Austria)



SAVAGE RIVER
ELEVATION 2780'