



Funded by the LIFE
Program of the EU

LIFE ÁGUEDA: insights from an ongoing river restoration

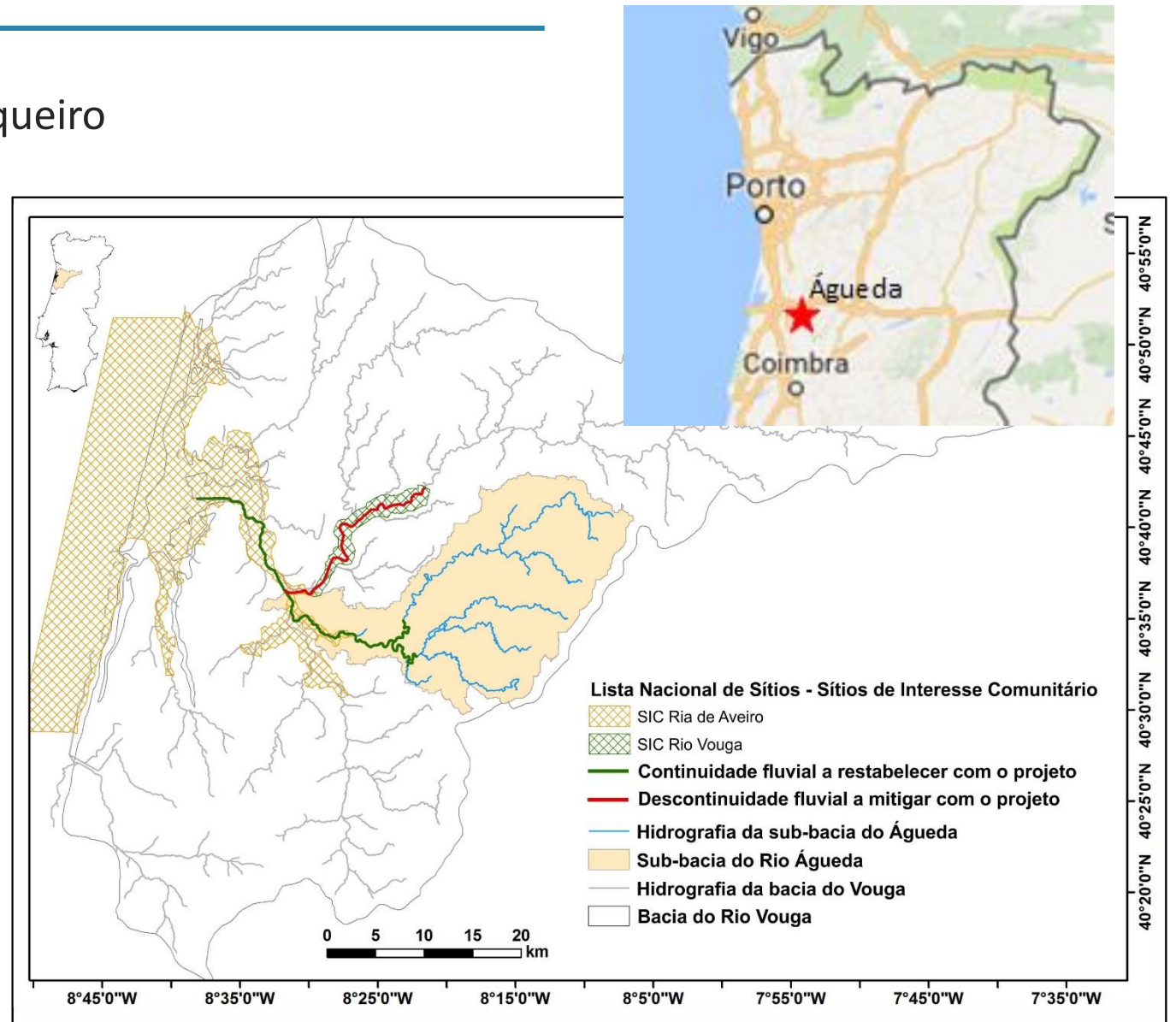


Connected Rivers
Lisbon, 19-21 May 2022



- **Location:** Rivers Vouga / Águeda / Alfusqueiro
- **Duration:** Aug-2017 to Jul.2022
- **Budget:**
 - **Total:** 3 324,804 € (60% EU)

Co-financing:





Coordinating Beneficiary:



• University of Évora / MARE

Associated Beneficiaries:



• Águeda Municipality (CMA)



• Mora Municipality (CMM) / Freshwater Aquarium



• Aqualogus – Engenharia e Ambiente, Lda.



• Docapesca – Portos e Lotas, S.A.

Institutional Support:



Other supports:



- **Elimination of hydro-morphological pressures towards the reestablishment of conditions for a good ecological status, as required by the WFD and River Basin Management Plans.**

Proposed solutions and key actions:

- **Integration of demonstrative solutions for re-naturalizing river morphology with innovative solutions targeting complimentary issues. *e.g.*:**
 - Installation of nature-like fish passages;
 - Removal of river barriers and re-naturalization of the river bed;
 - Translocation program of juvenile European eels ;
 - Riparian habitat restoration.
- **Recreational and commercial fisheries management**
 - Anglers' engagement for fish monitoring (development of a mobile App)
 - Market differentiation and fish valorization (mobile registration and label of origin)
- **Stakeholders engagement and compatibility of ecosystem uses**



Petromyzontidae

Petromyzon marinus L. – Sea lamprey (VU)

Salmonidae

Salmo trutta trutta (L.) – Sea trout (CR)

Clupeidae

Alosa alosa (L.) – Allis shad (EN)

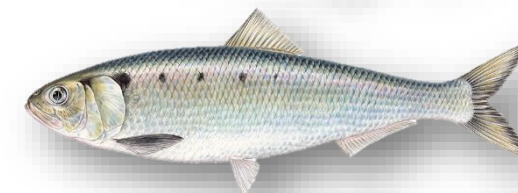
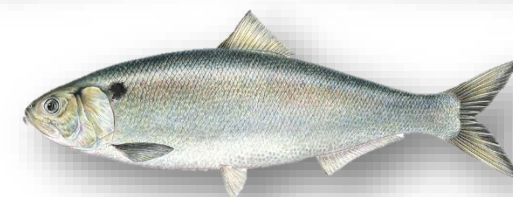
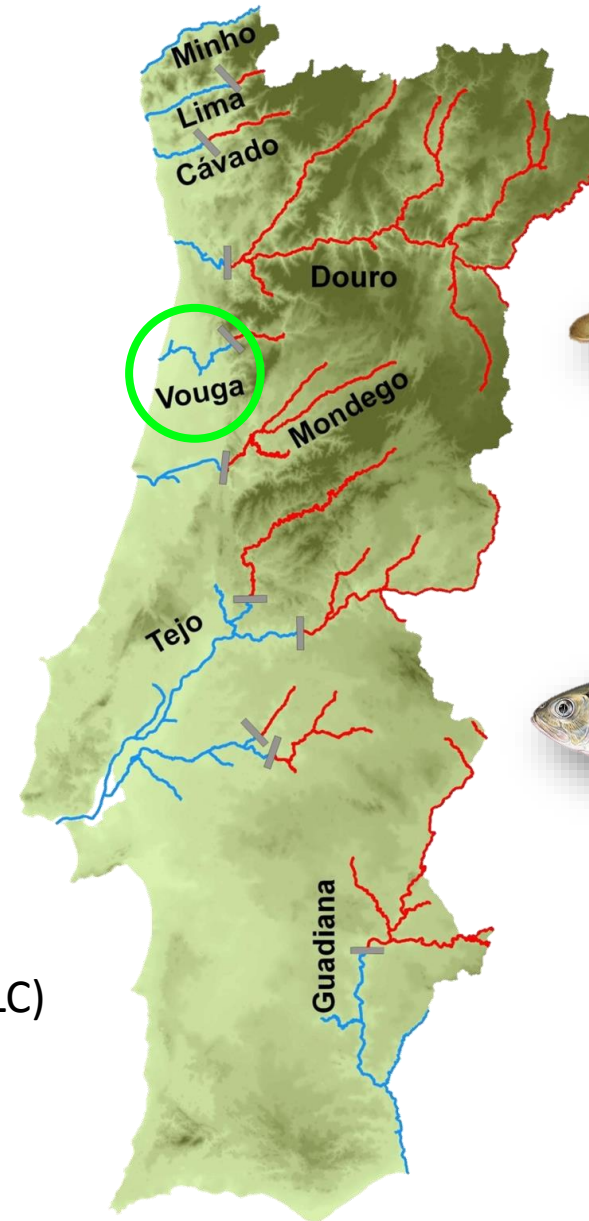
Alosa fallax (Lacépède, 1803) – Twait shad (V)

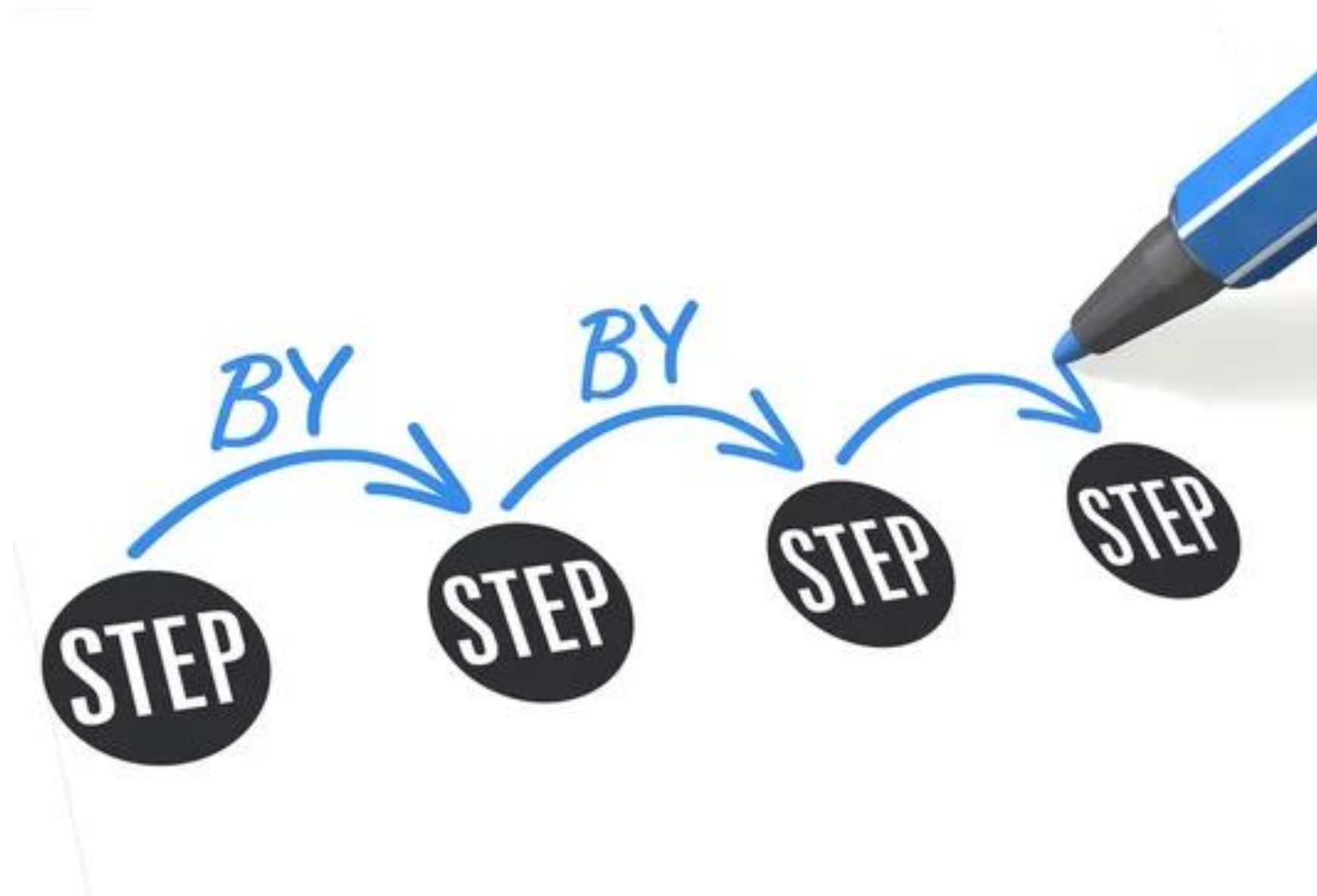
Anguillidae

Anguilla anguilla (L.) – European eel (EN)

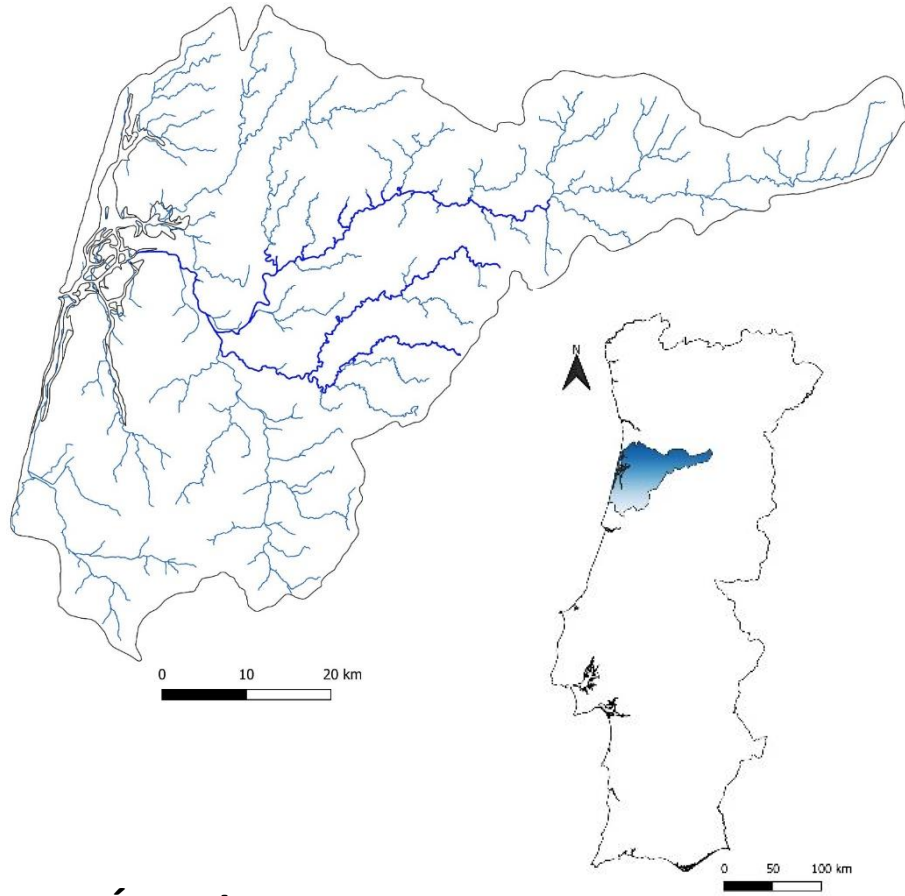
Mugilidae

Chelon ramada (Risso, 1827) – Thin lipped grey mullet (LC)



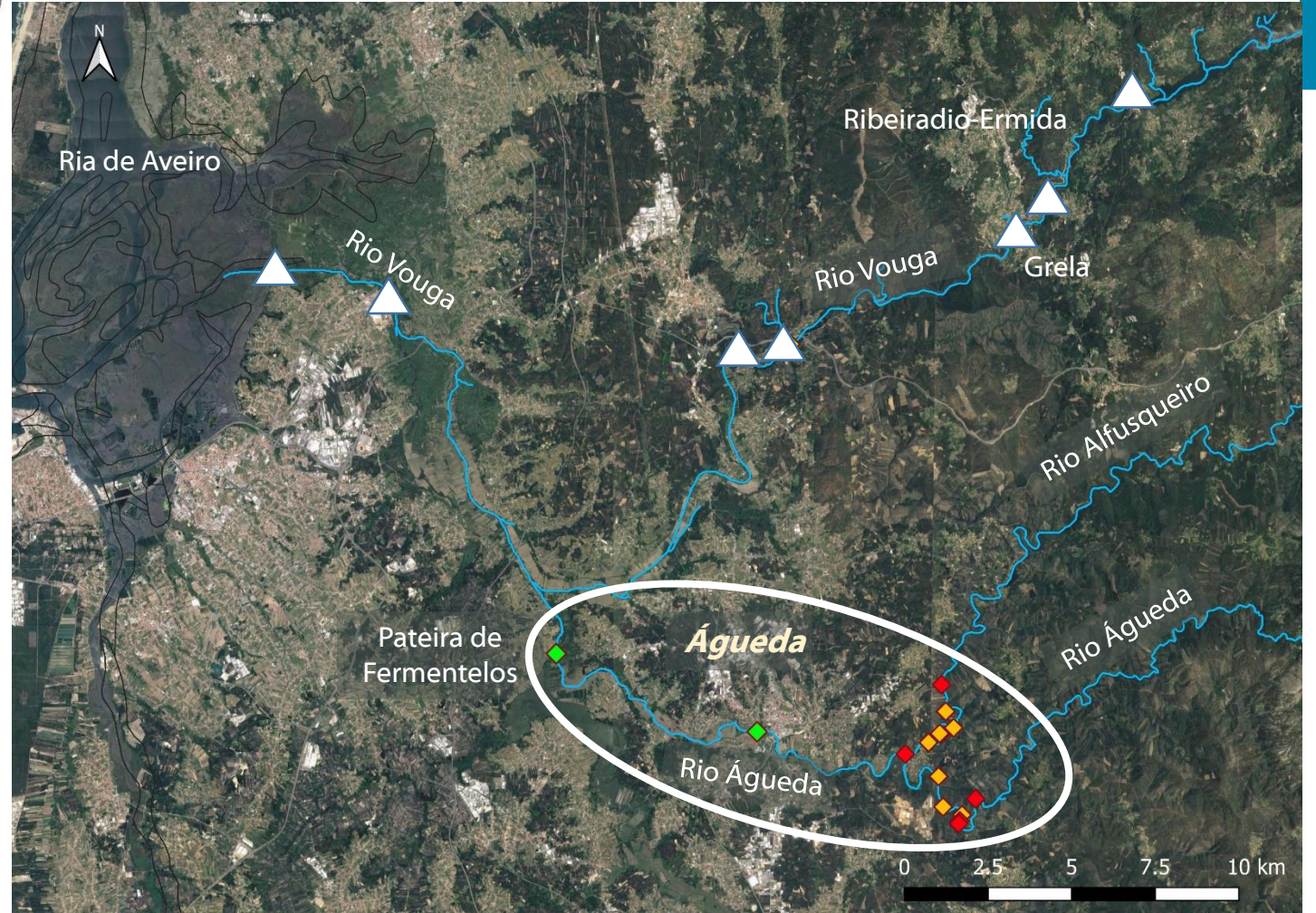


LIFE Águeda | Identification of the barriers to fish migration



LIFE Águeda:

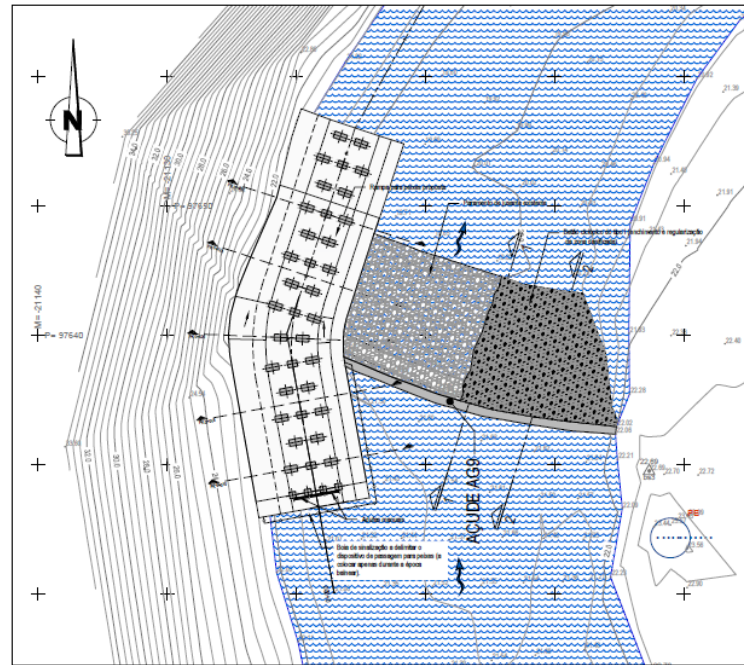
- ◆ - Type I (Fish pass devices)
- ◆ - Type II (Removals or structural adaptations)
- ◆ - Type III (Management plan)



LIFE Águeda | Development of the engineering project

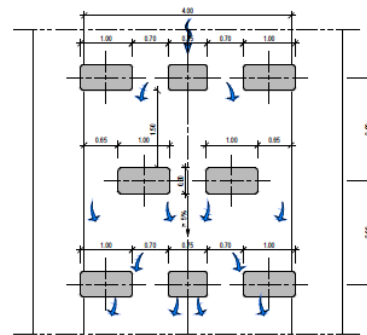


CONSTRUCTION OF 5 FISH PASSES

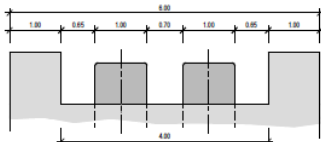


PLANTA
Esc. 1:200

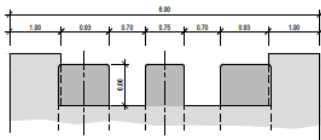
LEVANTAMENTO TOPOGRÁFICO EFETUADO POR: VAMAPA, Serviços de Topografia, SA
SISTEMA DE REFERÊNCIA: PT-TM62571989



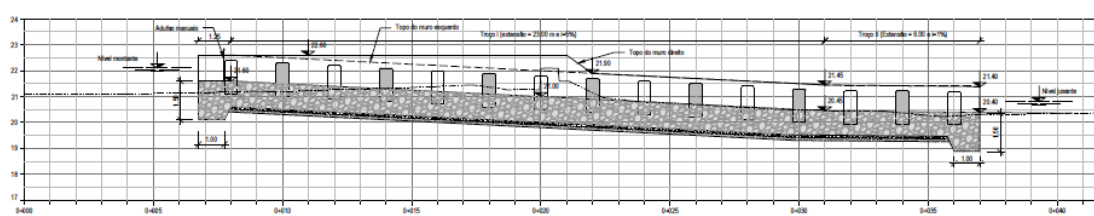
PLANTA PORMENOR TIPO
Esc. 1:50



SECÇÃO TIPO 1
Esc. 1:50



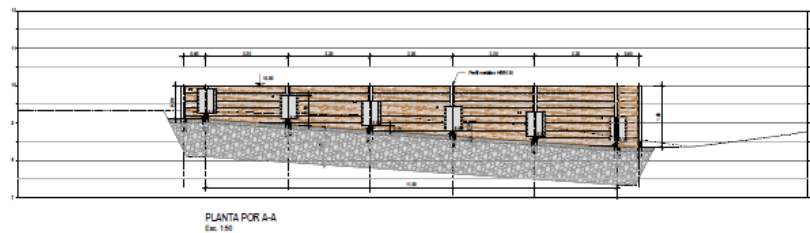
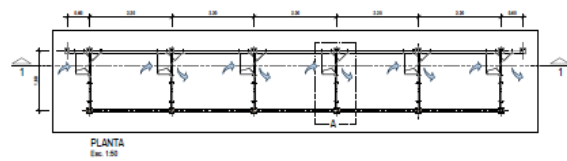
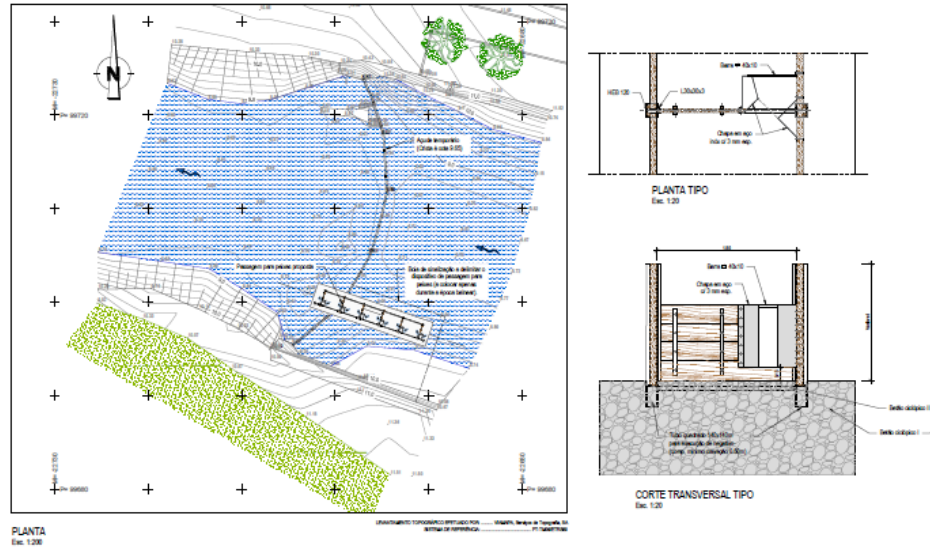
SECÇÃO TIPO 2
Esc. 1:50



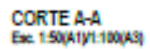
PERFIL LONGITUDINAL
Esc. 1:100



LIFE Águeda | Development of the engineering project



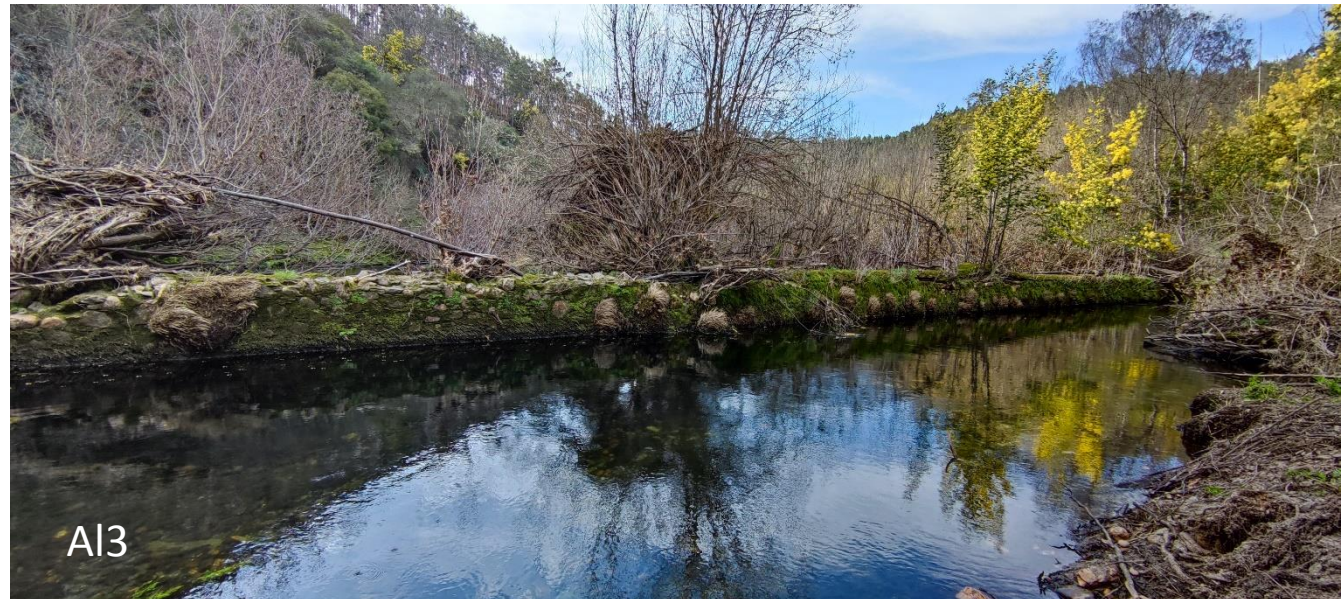
LIFE Águeda | Development of the engineering project (Eel trap)



LIFE Águeda | Identification of the barriers to fish migration



REMOVAL OF 8 WEIRS



LIFE Águeda | Contact with the owners of the weirs / licensing procedure



- Explaining the project objectives;
- Ancient water mills' weirs (> 100 years old);
- Some legal issues regarding the rightful owners (several heirs);
- Obtaining an approval statement from all the owners;
- Licensing procedure (APA - Portuguese Environmental Agency);



LIFE Águeda | Stakeholders engagement



- Public announcement in plenary meetings;
- Meetings with stakeholders;
- Public tender contract.



FINALLY AFTER MORE THAN 2 YEARS!!!!
Demolition works: < 8h





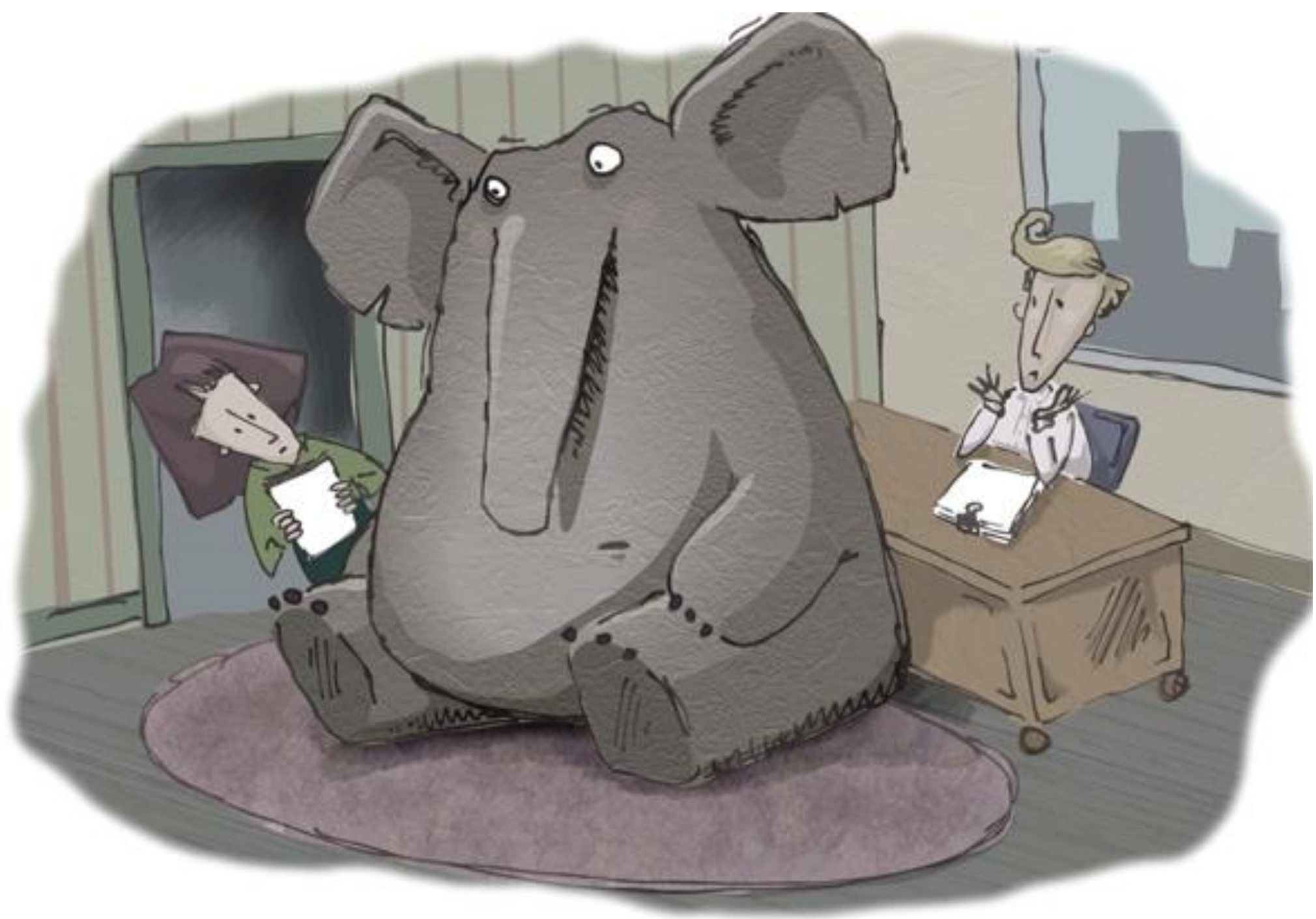
FINALY AFTER MORE THAN 2 YEARS!!!!
Demolition works: < 8h



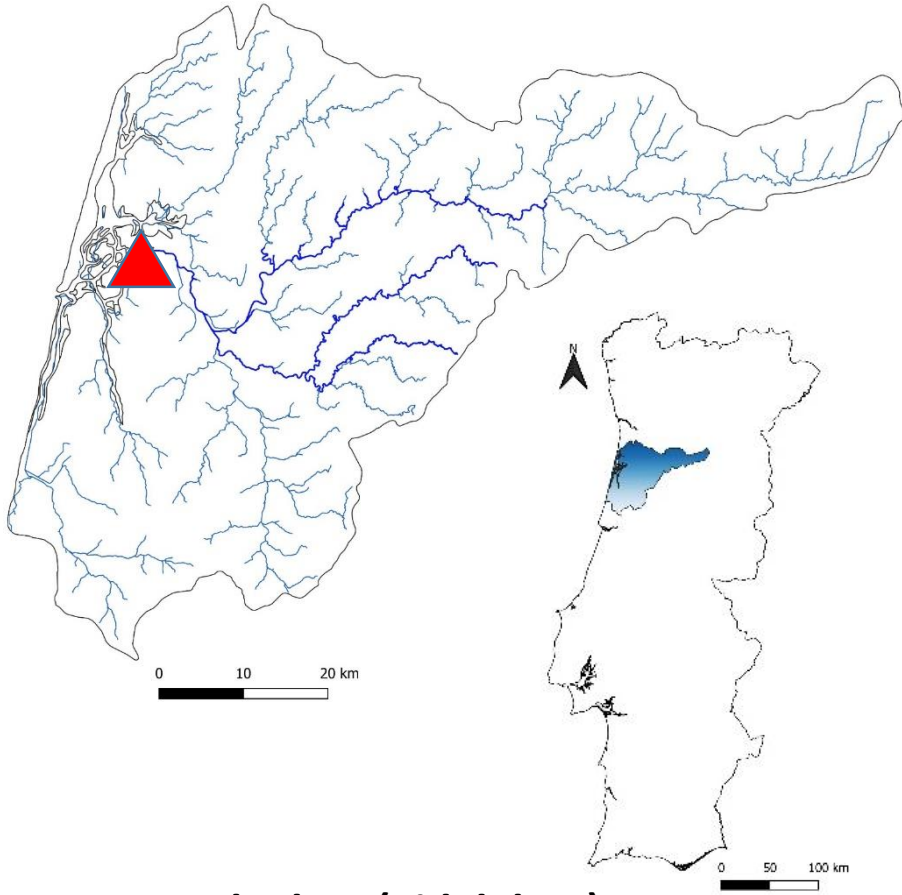


FINALLY AFTER MORE THAN 2 YEARS!!!!
Demolition works: < 6h



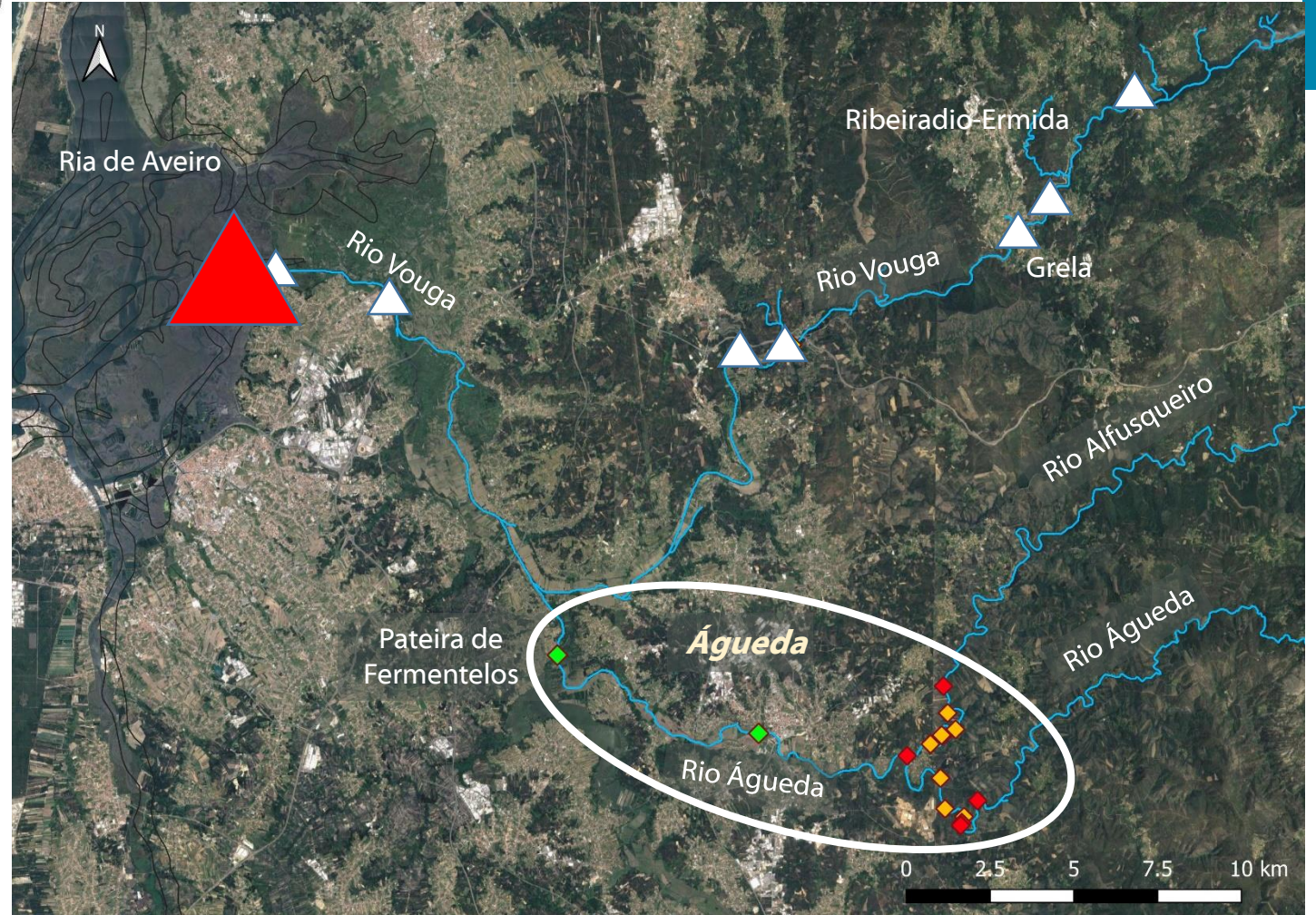


LIFE Águeda | New project old problems...



Ponte-Açude dam (Tidal dam):
3-m height gates closed during flood
between May and October

NO FISH PASS!!!!





Thanks

life.agueda@uevora.pt

www.life-agueda.uevora.pt

<https://www.facebook.com/LIFE.AGUEDA/>