

How can 'deculverting' become business as usual in Europe.

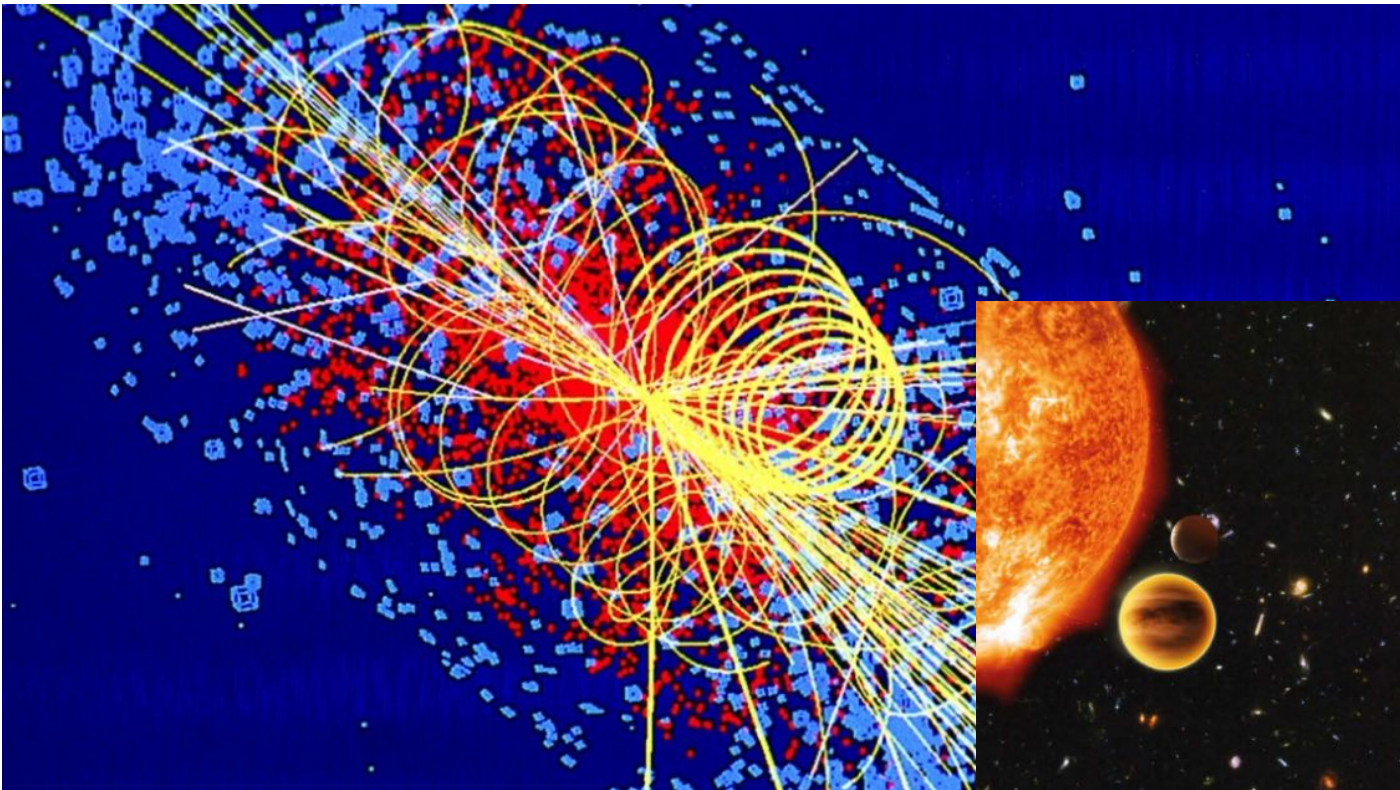
Kim Aarestrup, Technical University of Denmark.

 kaa@aquu.dtu.dk | [@Kaa_Telemetry](https://twitter.com/Kaa_Telemetry) 

How can 'deculverting' become business as usual in Europe.

- WTF
- Shifting Baselines
- Basic rules
- What to do?





Shifting baseline/EGA:

- 1. Each generation experiences nature as kids**
- 2. Maintain this view as baseline nature**
- 3. Nature deteriorates**
- 4. Cycle repeats**



Stupidity within stupidity



LOOK NATURE!!!



Simple guidelines

Aim higher - avoid the passage problems from start:

- 1. DO NOT CHANGE THE ORIGINAL GRADIENT OF THE RIVER**
- 2. USE PIPES THAT ARE BIG ENOUGH TO ALLOW BOTH NATURAL BOTTOM SUBSTRATE AND TAKE ALL THE WATER**
- 3. WITH ALREADY EXISTING CULVERTS, GO TO POINT 1 and 2.**
- 4. REVISIT 1, 2 AND 3!**
- 5. IF YOU END HERE RECONFIGURE THE STREAM ON BOTH SIDES TO ALLOW PASSAGE.**



• Volvo V70 for scale





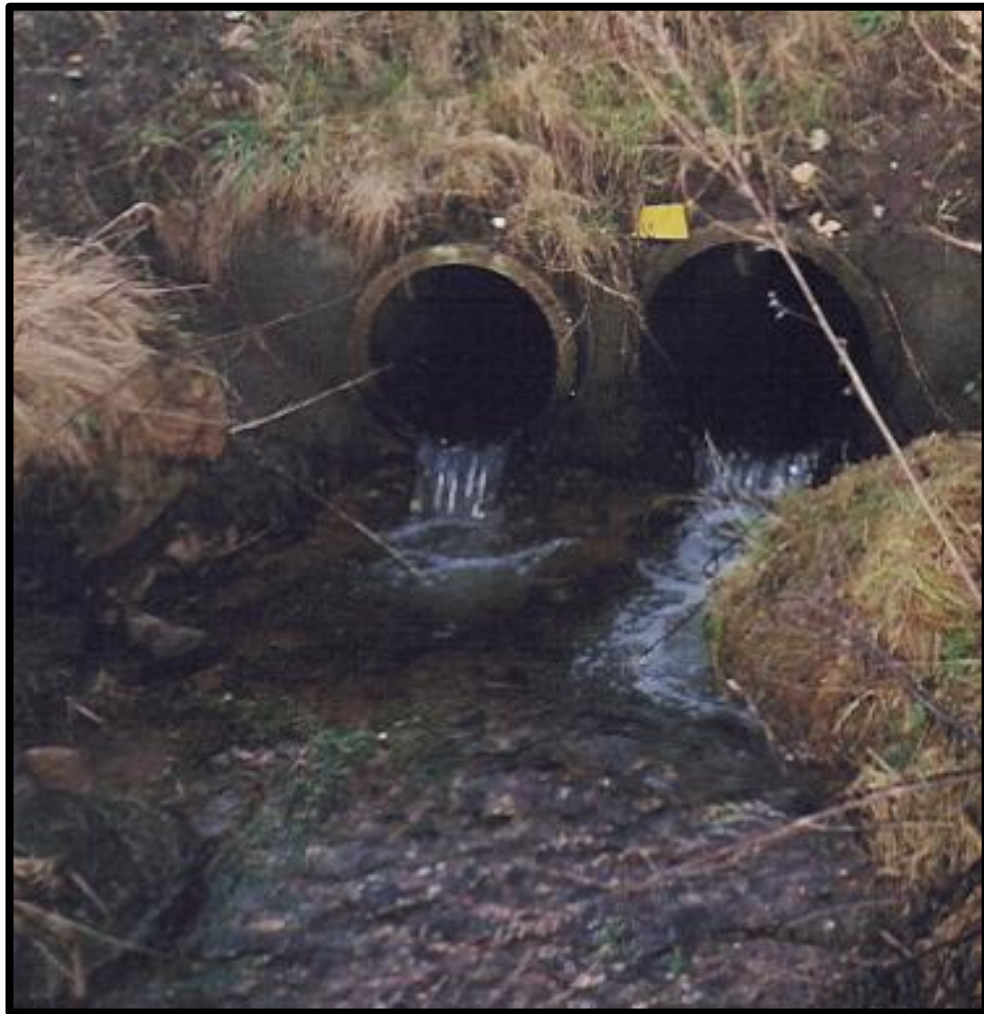




Youtube/post 10

<https://www.youtube.com/watch?app=desktop&v=BozXU7H1fls>

Before



After



Engage locals and measure effects



Business as usual/Scale up

- 1. Aim higher**
- 2. Stronger legislation**
- 3. Engage locals**
- 4. Measure effect and publish (e.g. TIME)**
- 5. Ensure a legacy**

**Make the world a better place – culvert
by culvert**