

Low Mill Weir

Part of the Eden River Restoration Strategy

Daniel Brazier
2017

Eden Rivers Trust



- Main river over 145 km in length
- Catchment over 2300 km²
- Part of designated SAC
- Numerous SSSI features and SAC species



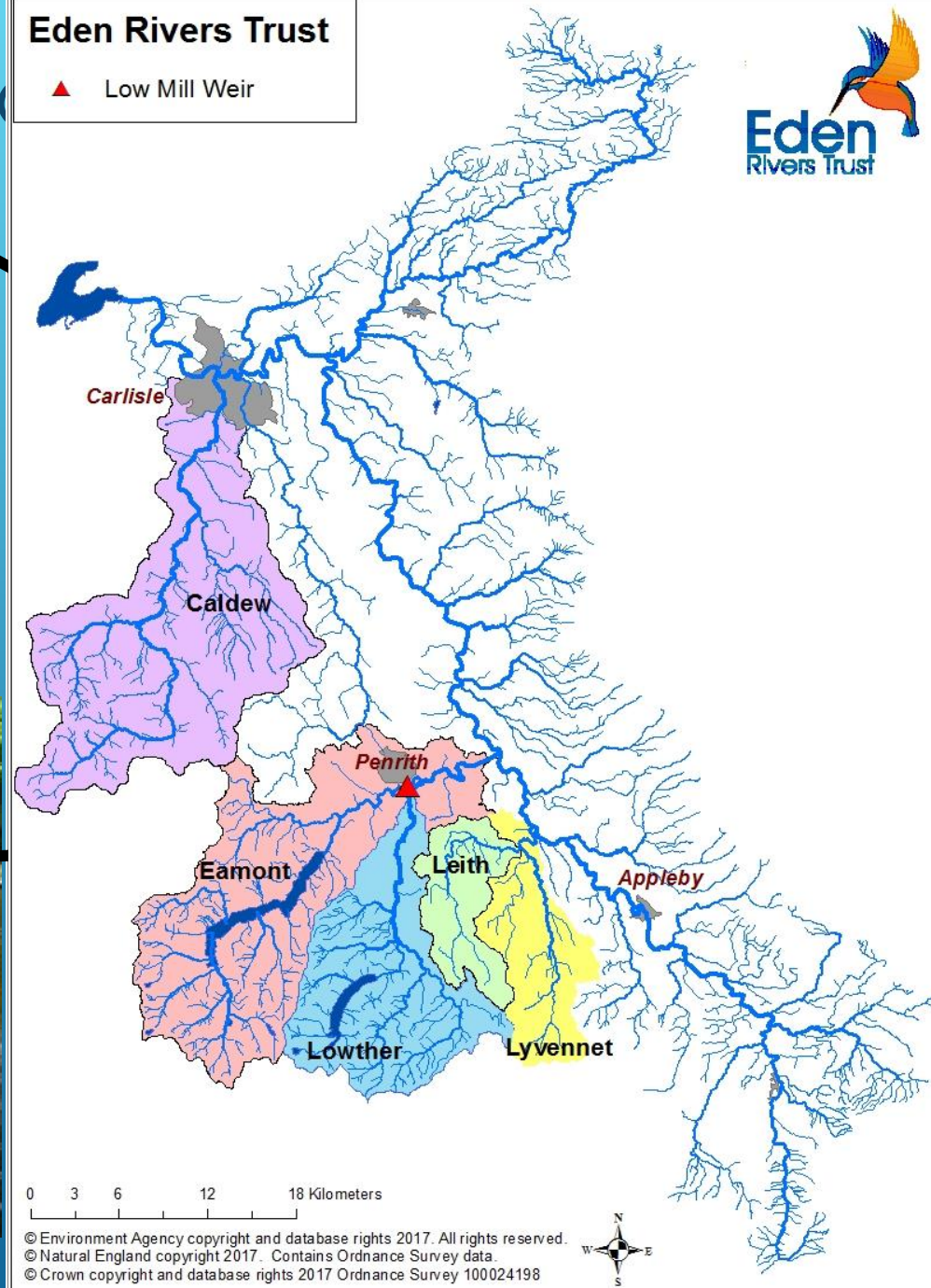


6 year strategy to restore natural processes for the benefit of people



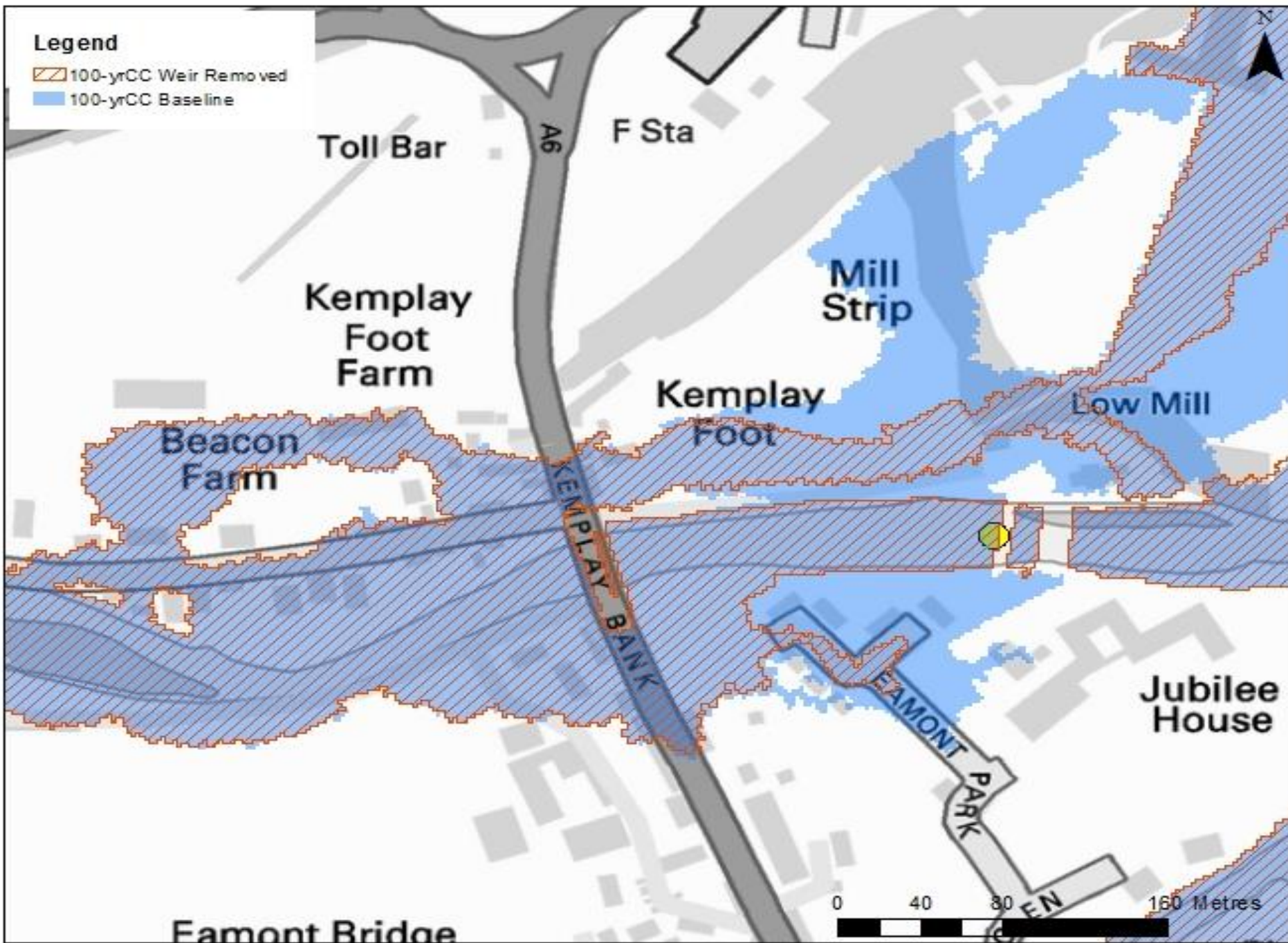
Eden Rivers Trust

▲ Low Mill Weir



Legend

- 100-yrCC Weir Removed
- 100-yrCC Baseline





Client: Eden Rivers Trust

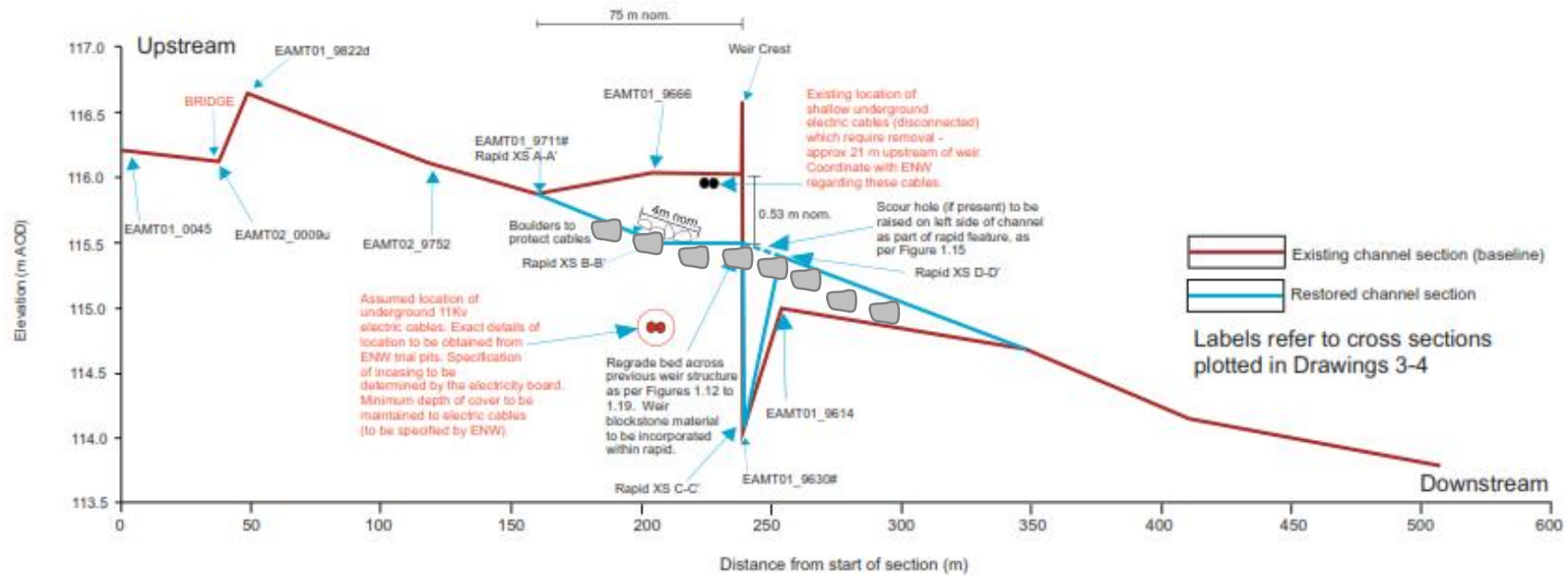
Project: Weir removal and river restoration -
River Eamont at Low Mill Weir



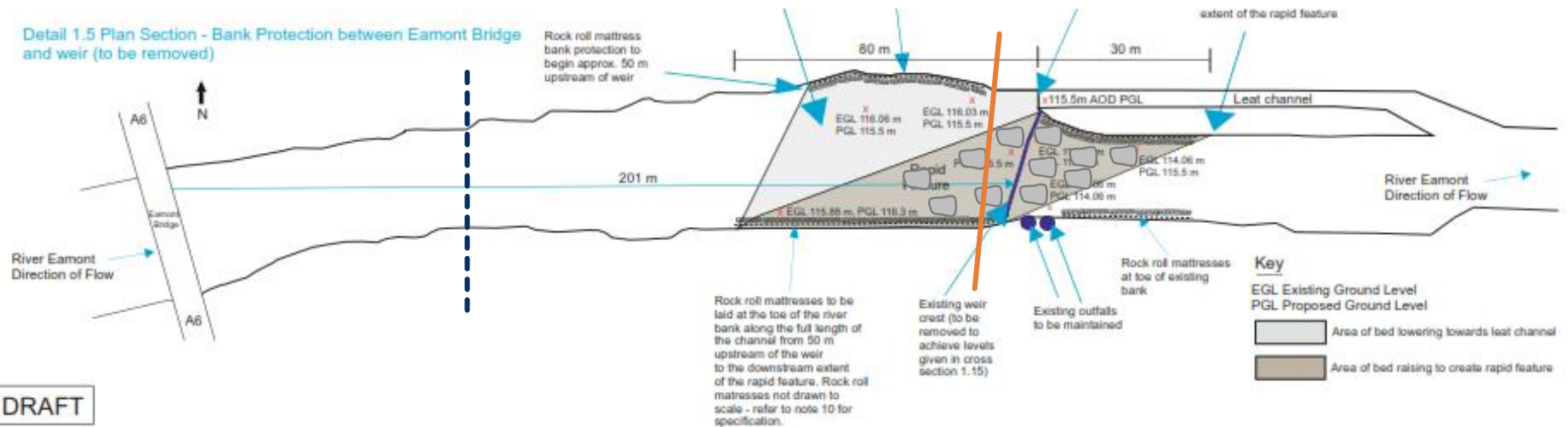
AECOM
1st Floor, Victoria House
Victoria Square
Birmingham

Design:	AD
Chk'd:	OS

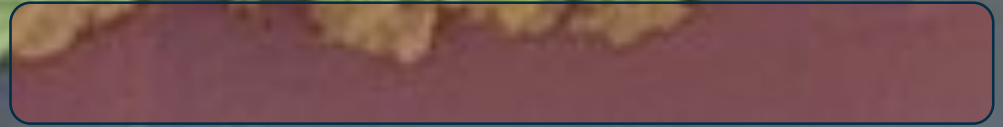
1.8 Low Mill Weir Removal - Long Section



Detail 1.5 Plan Section - Bank Protection between Eamont Bridge and weir (to be removed)



Area of predicted increase in
velocity and potential scour



► Options going forward:

- Relocate Waste Water pipe
 - Pro's – Flood alleviation, fish passage, remove pollution risk, removes weir liability;
 - Con's – Expensive, delay in progress, thus increased immediate pollution risk
- Protect in current location
 - Pro's – Mitigate immediate pollution risk, low cost;
 - Con's – Increases local flood risk, barrier to fish migration, maintains weir liability;
- Open to ideas.....



Thank you